

# SimaPro multiuser

The basics

SimaPro

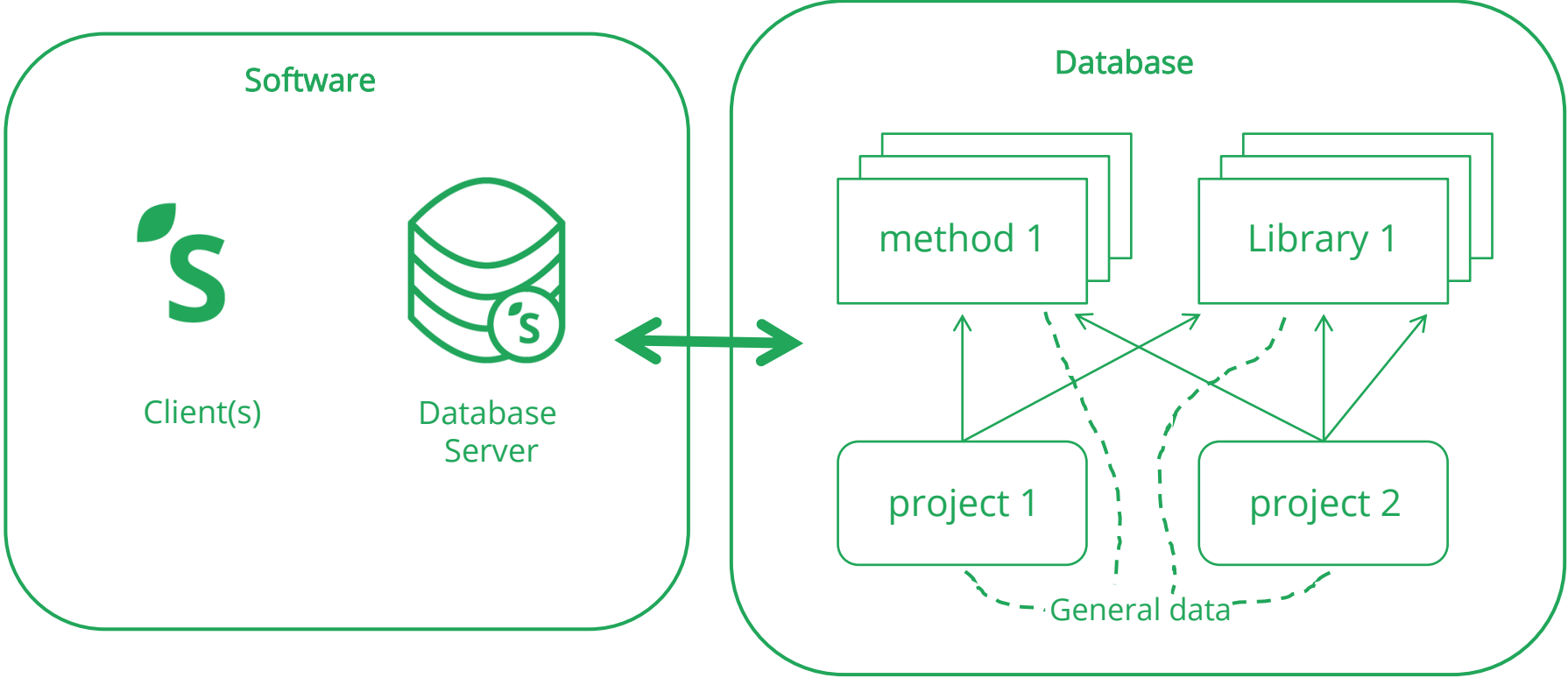


# Why SimaPro multiuser?



- Great for collaboration – users can work together in the same database, same project at the same time!
- Ideally 1 database for all → less hassle updating
- Cheaper than purchasing multiple single user licenses
- Caveat: single user is faster so please manage expectations!

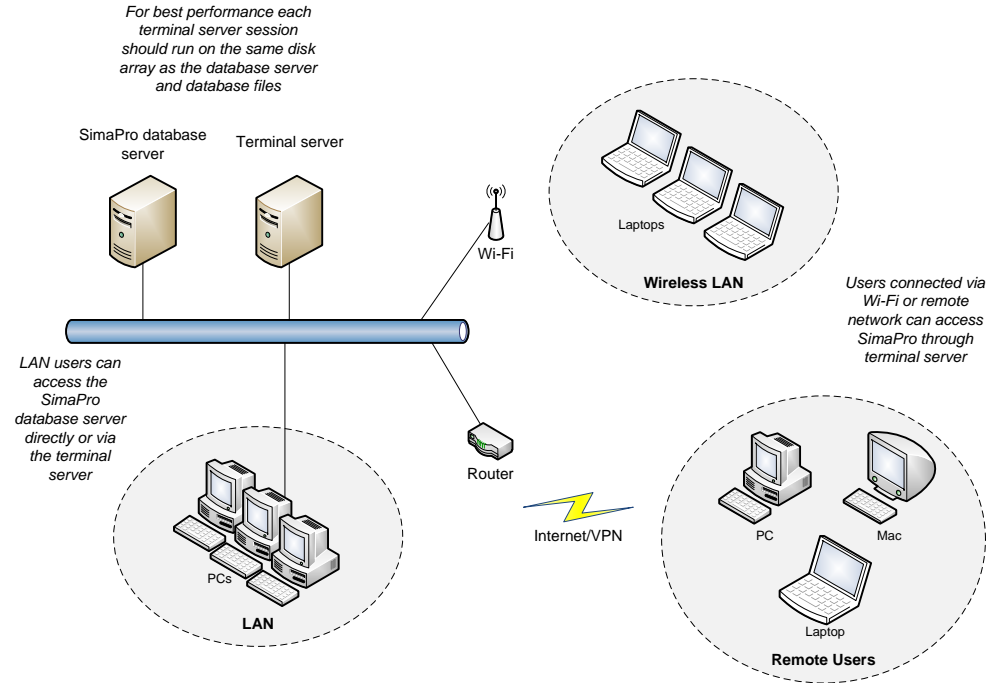
# SimaPro multiuser – the building blocks



# Terminal server configurations



- Example of possible SimaPro multi-user infrastructure
  - SimaPro client is installed on the terminal server
  - A remote desktop is set up to which users connect via VPN
- Please refer to the [installation manual](#) for detailed explanation



# Technical requirements



- For **optimal performance**, the SimaPro client, SimaPro database server and Database should be installed on the same machine.
- Ideal installation: all components on terminal/virtual server that can be accessed remotely by the users.
- Minimum requirements: <https://support.simapro.com/articles/Article/SimaPro-System-Requirements>
- Examples of setups & specs that work well with 5+ users at the same time:

	Example 1	Example 2	Example 3
<b>Which tooling is used (Citrix, VMware version x.y etc)</b>	Windows server 2016 with Remote Desktop Role installed.	A single dedicated Azure hosted VM running Remote Desktop Server. SimaPro is published as an RemoteApp to end-users	Virtual server on VMware 7.0.3.
<b>Specs of machine where the Database server is installed (OS, RAM, what type of disk drive)</b>	16GB RAM, 2x CPU, 250GB disk (SSL-)VPN solution for safe access Office 2016 / O365	Not applicable	Microsoft Windows Server 2019 Standard, 12GB RAM, 471GB partition for system, 60GB partition for data
<b>Specs of virtual desktop server, OS, how much RAM/disk space in total and allocated per user.</b>	Windows10 (Multisession) machine in Azure, 1x CPU with 4GB RAM and 20GB disk per user (SSL-)VPN solution for safe access Office 365	VM SKU: Standard D4s v3 (vCPUs4, RAM 16 Gb) Windows Server 2019-Datacenter	Same as above. No space allocated per user

# Installing SimaPro multiuser

**SimaPro**

The background is a solid green color. It features several white, curved, abstract lines that sweep across the lower and right portions of the frame, creating a sense of movement and design.

# Installation | Start with the server



**\*\*Should be done by IT\*\***

1. Install the SimaPro database server (SetupServerNNN.exe)
  - Run installer as admin!
  - You can install as a standalone application or as a service (most users install as a service so that it is always running in the background)
  - Also installs the SimaPro database
  - No activation needed

# Installation | Start with the server



The screenshot shows the SimaPro Database Server (9.3.0.3) interface. The main window is titled "Aliases" and displays a table with two columns: "Alias Name" and "Path". The table contains two entries: "Default" with path "C:\Users\Public\Documents\SimaPro\Database" and "Professional 9303" with path "D:\SimaPro Database\Professional9303". Below the table, there are input fields for "Alias Name" (containing "Default") and "Path" (containing "C:\Users\Public\Documents\SimaPro\Database"). There are also "Add", "Update", and "Delete" buttons at the bottom right. A green circle highlights the "Alias Name" field, with a line pointing to the text "Alias is the name given to a directory where the database files are located" on the left side of the image.

Alias Name	Path
Default	C:\Users\Public\Documents\SimaPro\Database
Professional 9303	D:\SimaPro Database\Professional9303

Alias Name:  Path:

Buttons: Add, Update, Delete

Version: 4.1201 Release (D24) Professional Edition 32bit

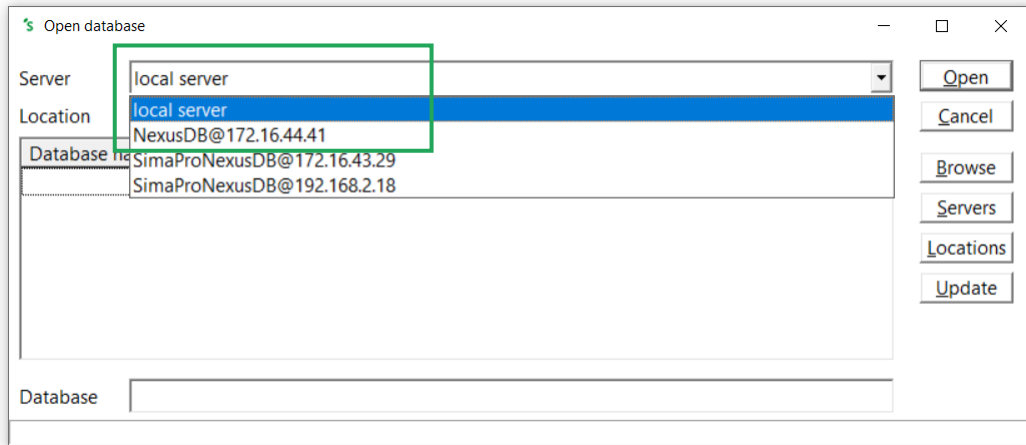
Alias is the name given to a directory where the database files are located



# Installation | Continue with installing the client



2. Install the SimaPro client (SetupSimaproNNN.exe)
  - Similar to single user installation but no database is installed
  - Activation is needed for the client
  - In the open database window, you now have the server option



# Installation | Keep in mind



- Step-by-step instructions and further details (ex. about ports, firewalls, etc.,) can be found in the [installation manual](#).
- For **optimal performance**, the SimaPro client, SimaPro database server and Database should be installed on the same machine.
- If you access the SimaPro database via **local server** (i.e direct access to the database not via the SimaPro database server), SimaPro behaves as a single user and no other users can access the database!
- If you only install the client no database is installed!
- [Silent install is possible](#) (useful for classroom)

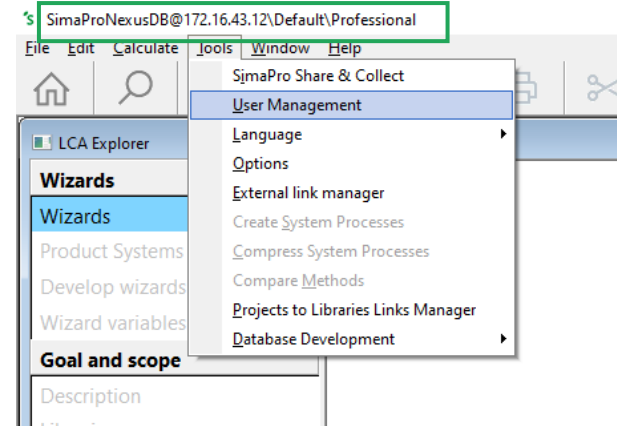
# Creating & managing users

SímaPro

# User management | Overview



- Organizations should appoint a SimaPro admin (Manager) internally
  - User management features are only available for Managers
  - Manager should access database via database server (not local server)
  - Managers can create and manage users, user types. They are the only ones that can import and export data, run a db check, etc.
- Users are defined on a database level (so can be different per database)
- Can only have 1 Manager per database
- During operations like database checks, import, export, no other users can be logged in (they will be kicked out if they are)



# User management | Creating and managing users



- User types and users are defined on database level (so for every database they can be different). The default user types are
  - LCA expert
  - LCA practitioner
  - Visitor
- The default (pre-defined) users, which are based on the above-mentioned types are:
  - Expert
  - Manager
  - Practitioner
  - Visitor

- You can create users & assign projects:
  - Manually
  - Via an import Wizard
  - Via importing an Excel file



**Check the Help file (F1) for more extensive info**

# User management | FAQs



- **What happens to the defined users if I import a database (for example during an update)?**  
The users defined will remain.
- **What happens to the defined users if I export a project as a database?**  
Depends on how you export:
  - Via local server: SimaPro behaves like a single user so the users will disappear and you need the Manager password to open the exported database.
  - Via nexus: The users defined will remain.
- **What if the Manager password is lost/ forgotten?**  
Contact SimaPro Support. We can clear the password if you send us file number 7 of the user's database (for example Professional07.nx1)
- **How can I 'kill' a user/ghost session?**  
Manager should log in> go to list of sessions, select user and then Shift+Delete buttons

# Updating SimaPro multiuser

**SimaPro**

The image features a solid green background with several white, curved, abstract lines that sweep across the lower and right portions of the frame, creating a sense of movement and design.

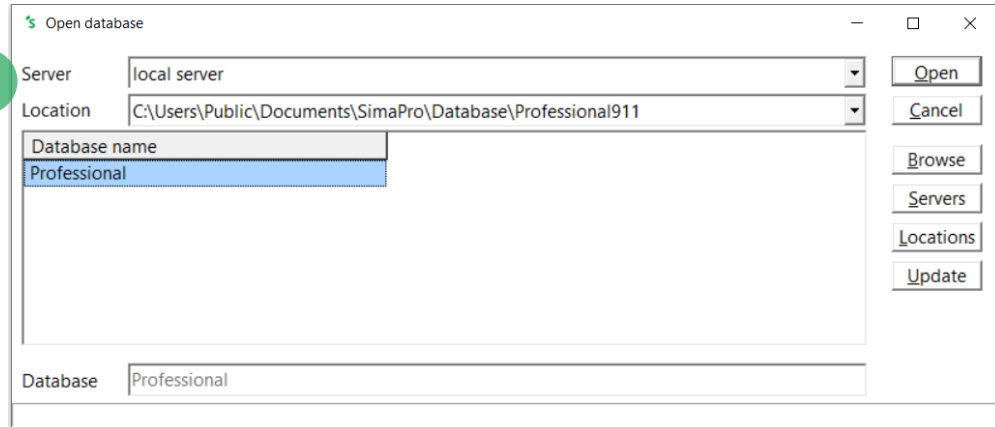
# Updating SimaPro multiuser environment



- First update the software components
- To speed up database import - software, working database, update database should be on same machine
- Start by opening the database you want to update via local server (special instructions for SimaPro Classroom users as they do not have this option!)
- Step-by-step instructions and further details can be found in the [update manuals](#).

**Not via database server  
(NexusDB@123.456.789)**

Keep in mind you may need  
Manager password to open  
database





# Let's keep in touch



**Newsletter:**  
[bit.ly/LCAnews](https://bit.ly/LCAnews)



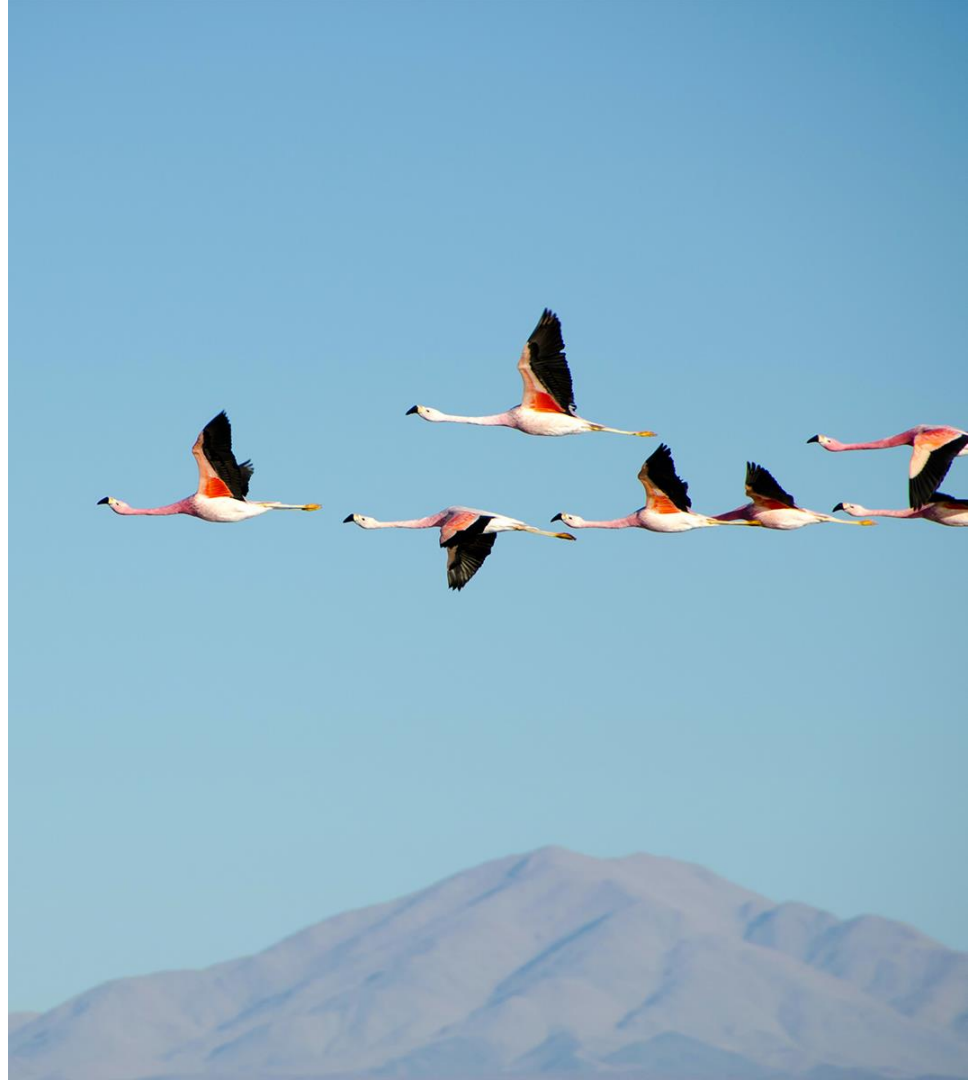
PRé Sustainability



SimaProUpdates



SimaPro



Thanks

Bedankt

Gracias

Terima kasih

ありがとう

Obrigado

谢谢

Tack

Grazie

شكرا

धन्यवाद

Dankie

Teşekkür ederim

감사합니다

Takk skal du ha

Vielen Dank

Merci

ขอบคุณ

Tak

Simapro

PRé

[simapro.com](http://simapro.com)